

Intelligence
Innovation
Efficiency



Think Big Machine Tool Co.,Ltd



Dedicated customer service



Targeted problem solutions



Professional maintenance



Security



Shanghai Think Big Machine Tool Co.,Ltd

CONTACT US:

- 📍 **Address:** Building 19, #199 East Guangfulin Road, Songjiang District, 201613, Shanghai, China
- ☎ **Telephone:** +86 021 57898131
- 🌐 **Website:** <https://tbmtool.com/>

ABOUT us

Shanghai Think Big Machine Co.,Ltd is the first overseas authorized enterprise of Chenxi Industrial Co., Ltd. established in 1990.

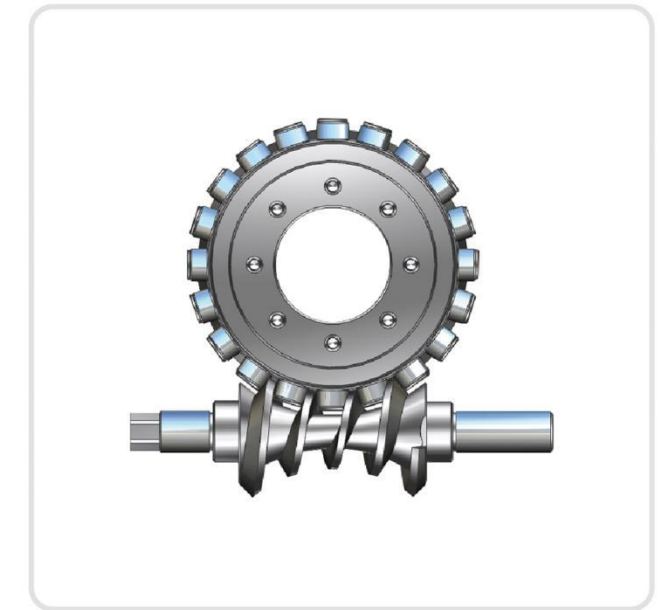
Owned processing plant, specialized in 30 years. It integrates research and development, precision processing and manufacturing, quality control and sales. Committed to building its own international brand.

Existing imported processing equipment: 40 computer numerical control lathes, 30 CNC vertical machining centers, 10 CNC horizontal machining centers, and more than 10 precision inner hole and outer circle grinding machines.

Precision testing equipment: Mitutoyo roughness gauge, height gauge, three coordinates, Renishaw interferometer, projector, etc.

- **01.** TB cam type vertical and horizontal rotary table
- **02.** DC cam horizontal rotary table
- **03.** W disc tailstock
- **04.** DDKA direct drive vertical rotary tableC
- **05.** DD-DB direct drive single arm 5 axis turntable
- **06.** DD-YL direct drive cradle 5 axis rotary table
- **07.** DDKE direct drive horizontal rotary table
- **08.** DD-RDB direct drive embedded single-arm 5 axisC
- **09.** TB-YL cam cradle 5 axis
- **10.** TB-RYL cam embedded cradle 5 axis
- **11.** DD-XBYL DD+ harmonic hybrid cradle 5 axis
- **12.** TB-XBDB cam + harmonic hybrid single-arm 5 axis
- **13.** TB-RDDYL cam+DD hybrid cradle 5 axis

Roller Cam Combination

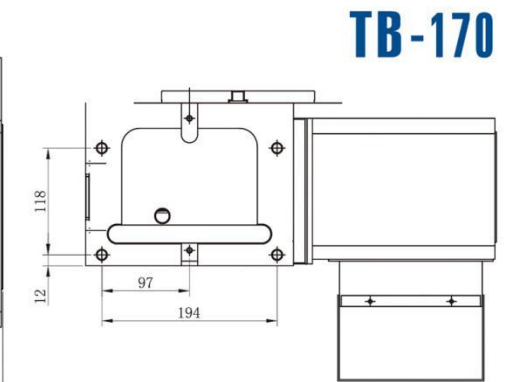
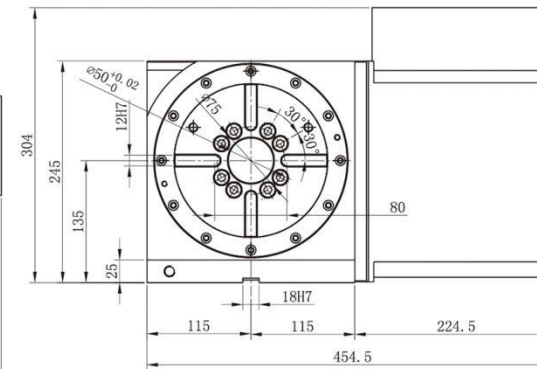
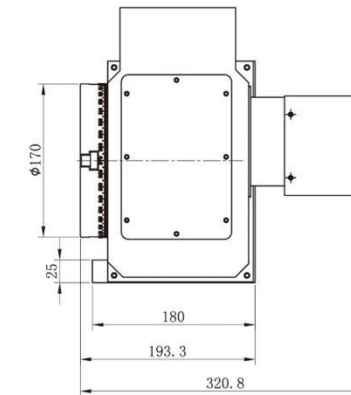


Features:

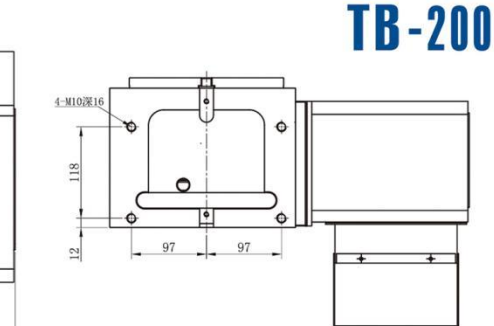
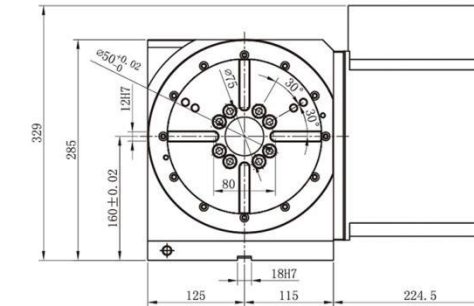
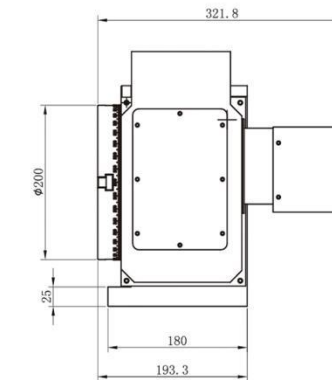
1. The core transmission mechanism adopts a cam transmission mechanism with high precision, zero backlashes, and wear resistance.
2. The whole series adopts hydraulic full-circumference brake mechanism, with fast braking response (no delay) and large braking force Stable, accurate, long-term use, no attenuation.
3. The whole series adopts YRT series turntable special crossed roller bearings, with higher radial load capacity. Better rigidity and accuracy retention of the whole machine.
4. The design of the whole machine adopts imported seals, which are resistant to oil, water and high temperature, and have a longer service time.
5. The changeable sheet metal design can stand or lie down, perfectly realizing the dual use of one machine.

TB-170 200 250 255 Parameters Table

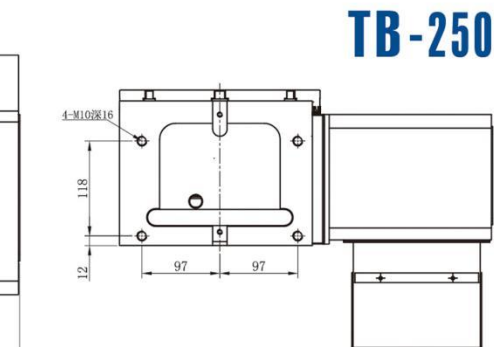
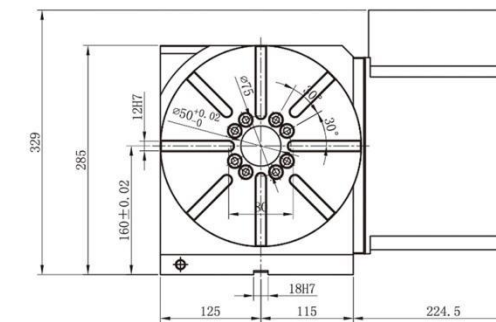
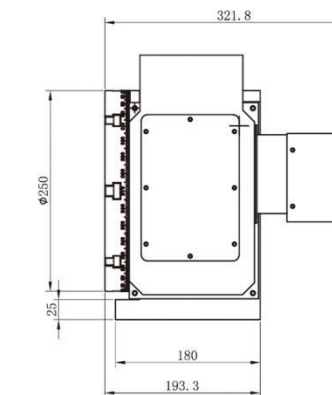
Item/Data	TB-170	TB-200	TB-250	TB-255
Rotary Table Diameter(mm)	Φ 170	Φ 200	Φ 250	Φ 255
Hole Diameter(mm)	Φ 50H7	Φ 50H7	Φ 50H7	Φ 70H7
Through-Hole Diameter(mm)	Φ 50	Φ 50	Φ 50	Φ 70
Width of T-Slot(mm)	12	12	12	12
Width for Located Block at the bottom(mm)	18	18	18	18
Brake pressure (KG/CM ²)	Oil pressure 30~35	Oil pressure 30~35	Oil pressure 30~35	Oil pressure 30~35
Applicable ambient temperature	10~50	10~50	10~50	10~50
Least Input Increment	0.001	0.001	0.001	0.001
Speed Reduction Ratio	1:60	1:60	1:60	1:60
Indexing Accuracy	20	20	20	20
Index Repeatability	± 4	± 4	± 4	± 4
Vertical /Using Tail Stock	75/150	100/180	150/250	180/300
Horizontal	150	200	300	350
Gross weight	67	82.4	87	97
Table Rotation Speed	50	50	50	50
Allowable cutting torque (KG.M)	40	44	55	75
Servo motor (optional)	FANUC (aiF4/aiF8/aiF12/bis8/bis12)			
	MITSUBISHI (HF-104T)			
	SIEMENS(IFK7060)			
Form of use	Vertical and Horizontal			



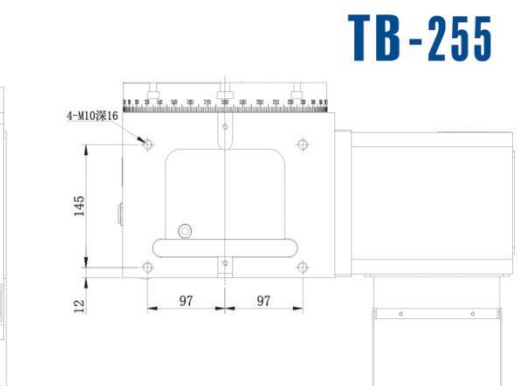
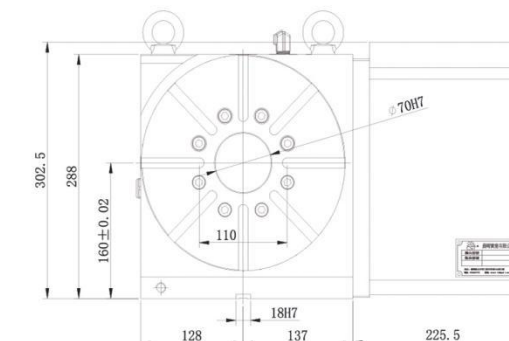
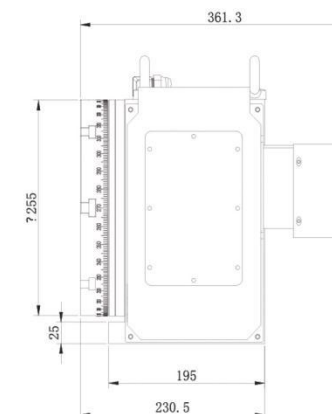
TB-170



TB-200



TB-250

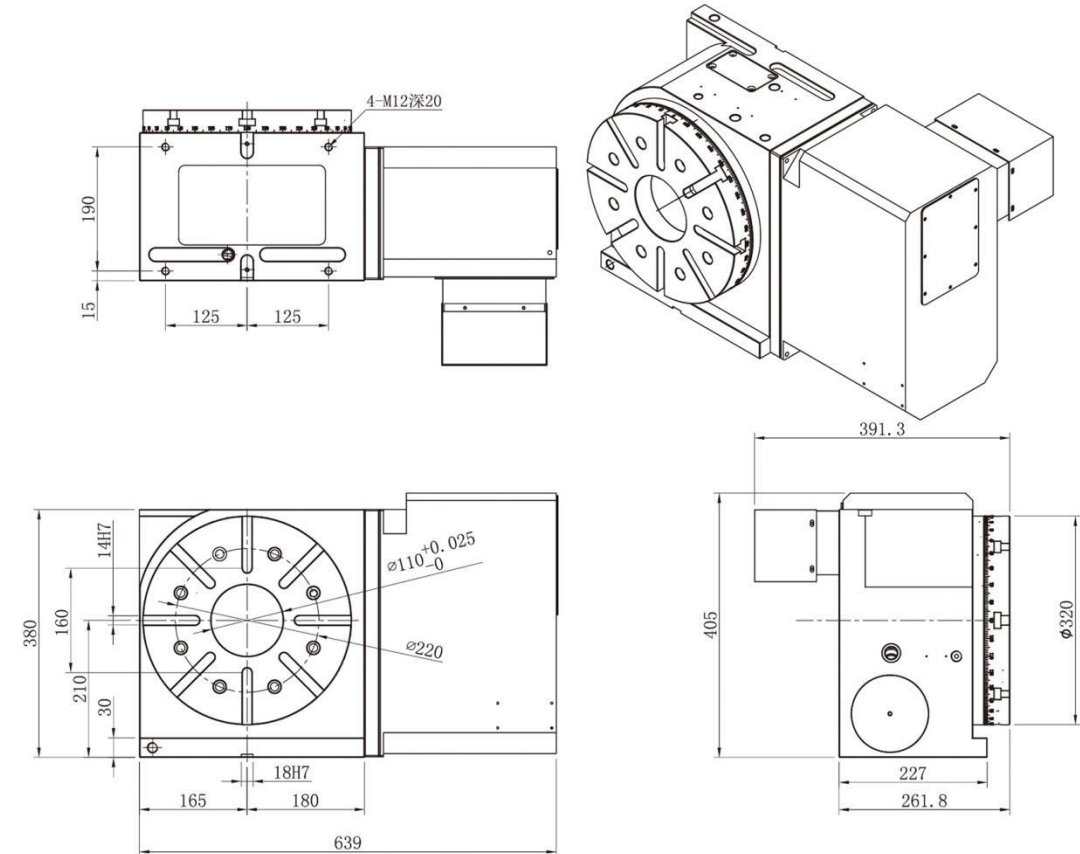


TB-255

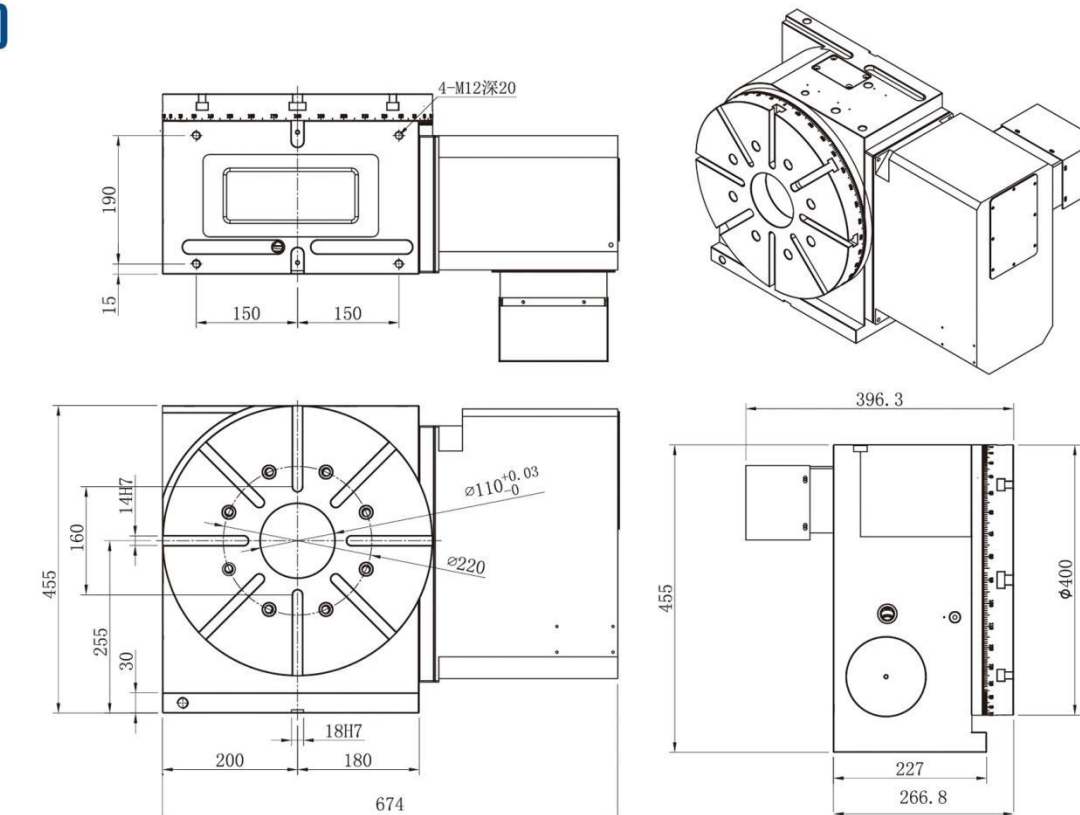
TB-320 400 Parameters Table

Item/Data	TB-320	TB-400		
Rotary Table Diameter(mm)	Φ 320	Φ 400		
Hole Diameter(mm)	Φ 110H7	Φ 110H7		
Through-Hole Diameter(mm)	Φ 110	Φ 110		
Width of T-Slot(mm)	14	14		
Width for Located Block at the bottom(mm)	18	18		
Brake pressure (KG/CM ²)	Oil pressure 30~35	Oil pressure 30~35		
Applicable ambient temperature	10~50	10~50		
Least Input Increment	0.001	0.001		
Speed Reduction Ratio	1:72	1:72		
Indexing Accuracy	15	15		
Index Repeatability	± 4	± 4		
Vertical /Using Tail Stock	200/500	350/700		
Horizontal	500	700		
Gross weight	220	276		
Table Rotation Speed	41	41		
Allowable cutting torque (KG.M)	110	180		
Servo motor (optional)	FANUC (aiF12/aiF22/bis22)			
	MITSUBISHI (HF-204S)			
	SIEMENS(IFK7083)			
Form of use	Vertical and Horizontal			

TB-320



TB-400



DC Series Horizontal Rotary Table



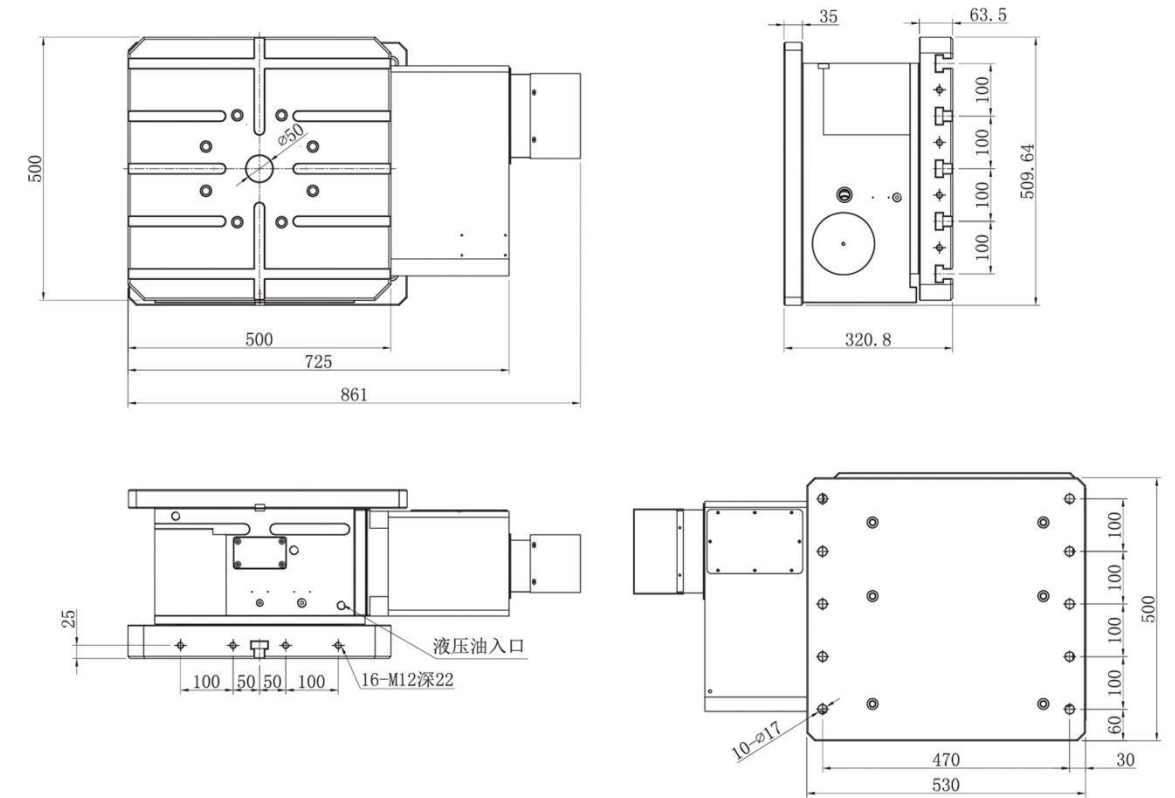
Features:

1. The whole system adopts a cam transmission mechanism, and the minimum division accuracy can be achieved at 0.001.
2. Based on the principle of double-bearing design, the rigidity can be increased by 30% compared with similar products.
3. The whole system is designed with a super large hydraulic encircling brake mechanism, which perfectly solves the problems of braking delay, positioning deviation and insufficient braking force.
4. Each model adopts the golden speed ratio, and the comprehensive performance is outstanding.

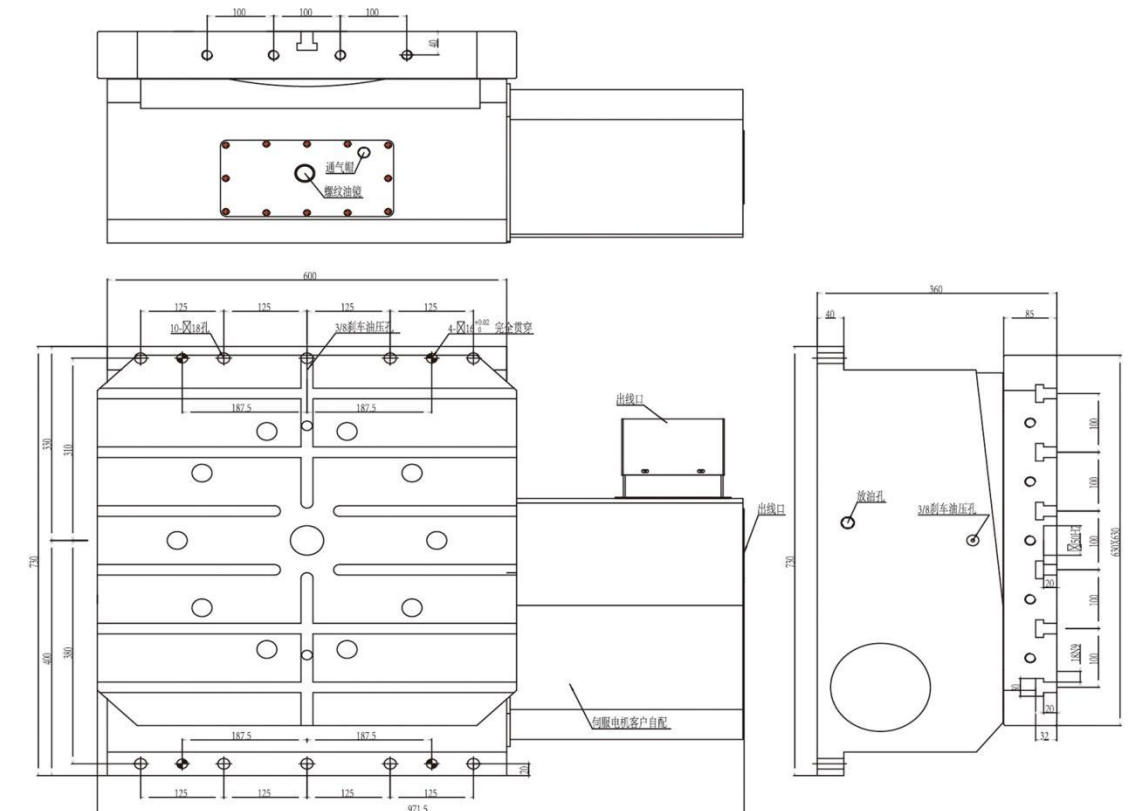
DC-500 630 800 Parameters Table

Item/Data	DC-500	DC-630		
Rotary Table Diameter(mm)	500X500	630X630		
Hole Diameter(mm)	Φ 50H7	Φ 50H7		
Through-Hole Diameter(mm)	-	-		
Width of T-Slot(mm)	18	18		
Width for Located Block at the bottom(mm)	18	18		
Brake pressure (KG/CM ²)	Oil pressure 30~35	Oil pressure 35~40		
Applicable ambient temperature	10~50	10~50		
Least Input Increment	0.001	0.001		
Speed Reduction Ratio	1:72	1:90		
Indexing Accuracy	15	15		
Index Repeatability	± 4	± 4		
Vertical /Using Tail Stock	-	-		
Horizontal	800	1500		
Gross weight	405	850		
Table Rotation Speed	41	25		
Allowable cutting torque (KG.M)	180	280		
Servo motor (optional)	FANUC (aiF12/aiF22/bis22)			
	MITSUBISHI (HF-204S)			
	SIEMENS(IFK7083)			
Form of use	Horizontal special			

DC-500



DC-630



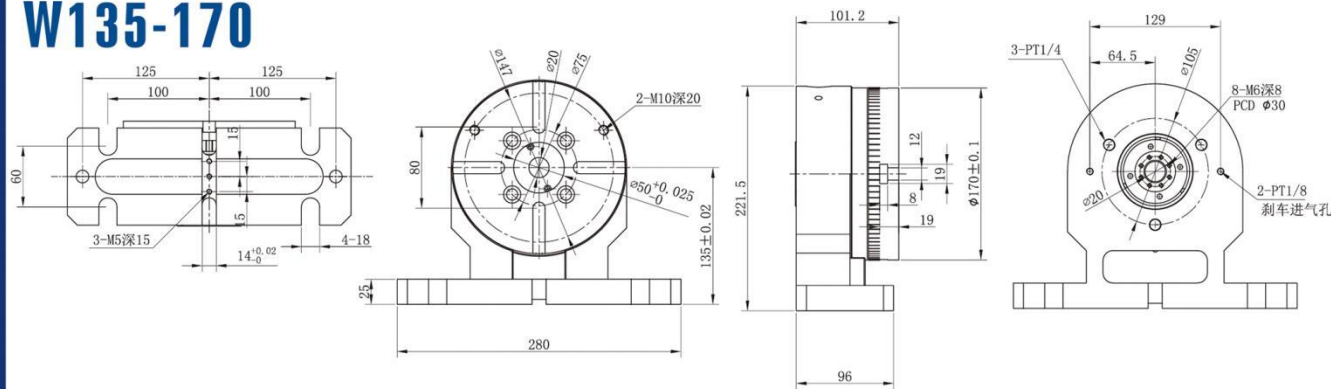
Disc Tailstock Combination



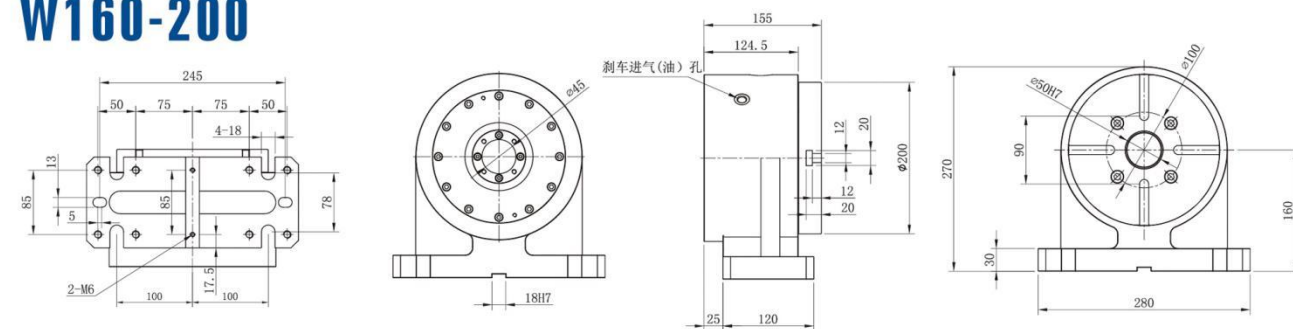
W-170 200 250 255 320 400 Parameters Table

Item/Data	W-170	W-200	W-250	W-255	W-320	W-400
Rotary Table Diameter(mm)	Φ 170	Φ 200	Φ 250	Φ 255	Φ 320	Φ 400
Hole Diameter(mm)	Φ 50H7	Φ 50H7	Φ 50H7	Φ 50H7	Φ 90H7	Φ 90H7
Through-Hole Diameter(mm)	Φ 20	Φ 45	Φ 45	Φ 45	Φ 45	Φ 90
Width of T-Slot(mm)	12	12	12	12	14	14
Width for Located Block at the bottom(mm)	18	18	18	18	18	18
Brake pressure (KG/CM ²)	30	30	30	30	30	30
Center Height(mm)	135	160	160	160	210	255
Gross weight	22	46	50	51	110	137

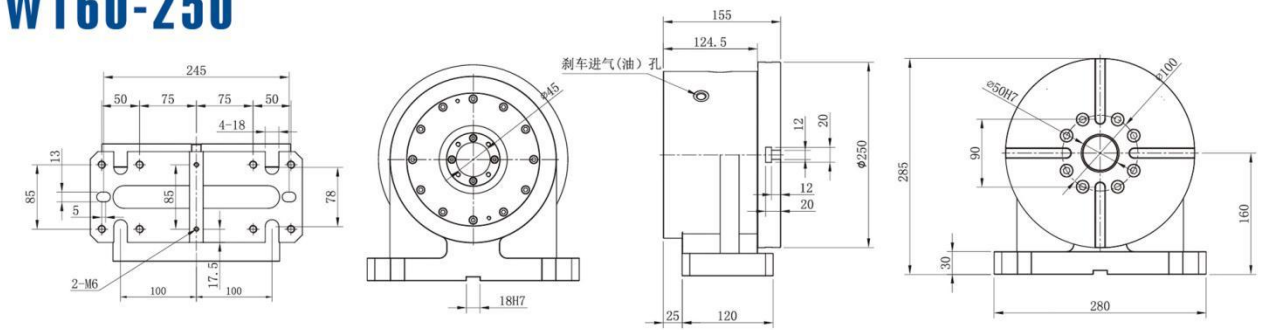
W135-170



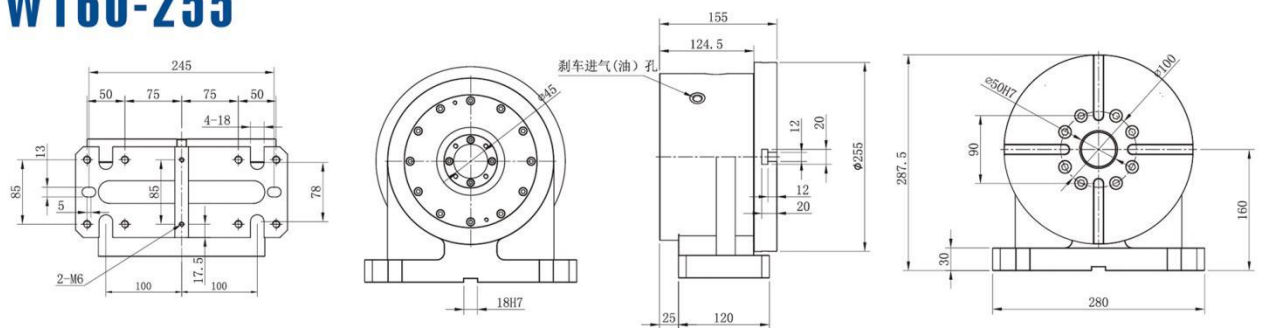
W160-200



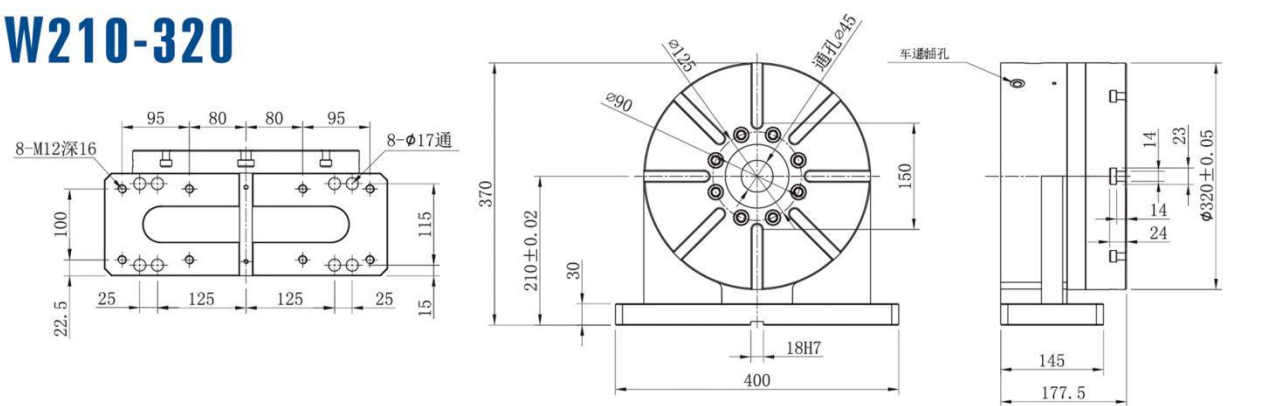
W160-250



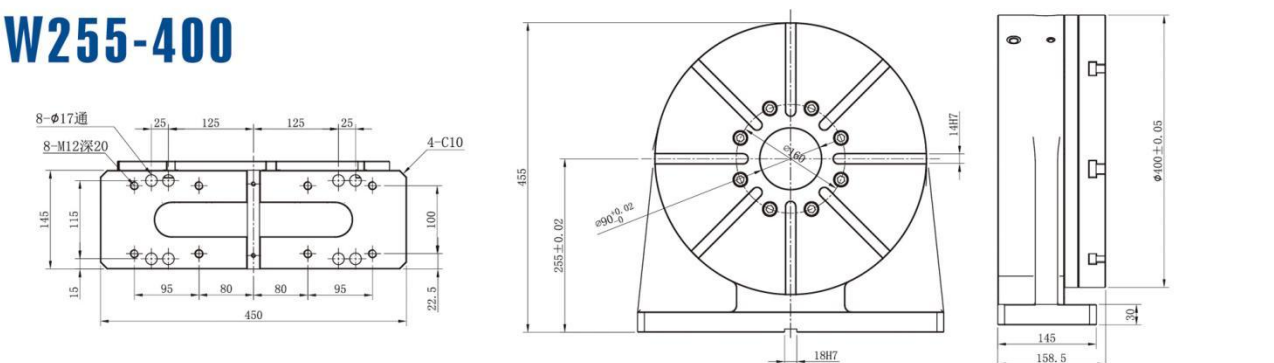
W160-255



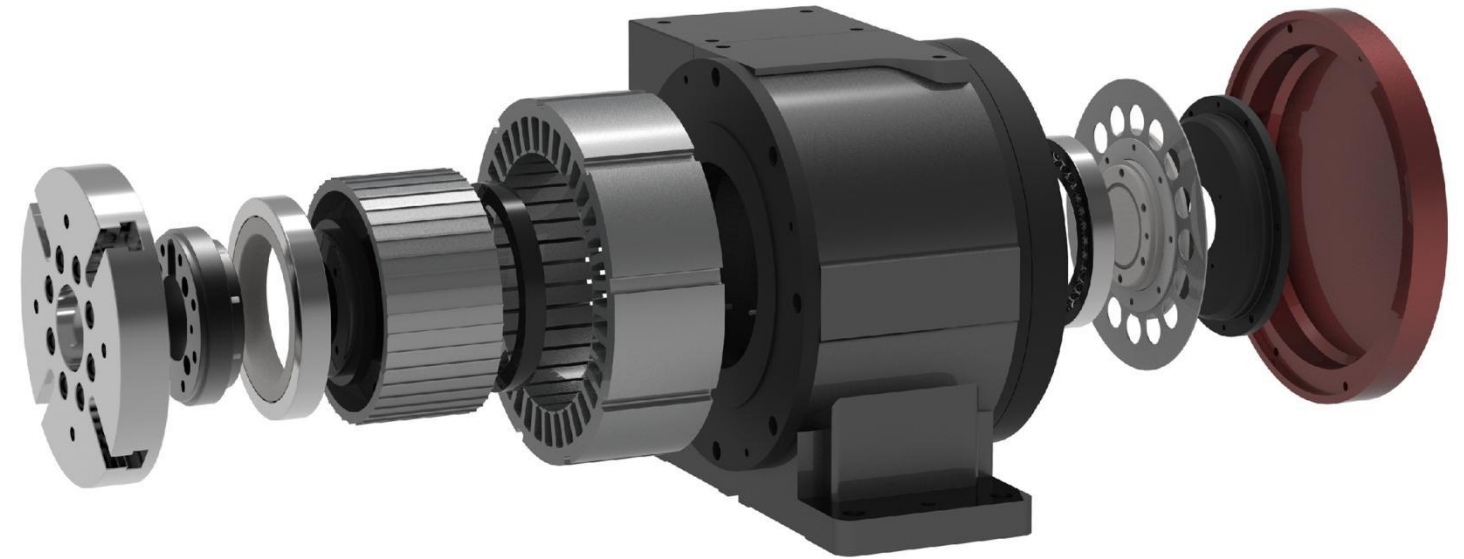
W210-320



W255-400



DDR Direct Drive Rotary Table



Features:

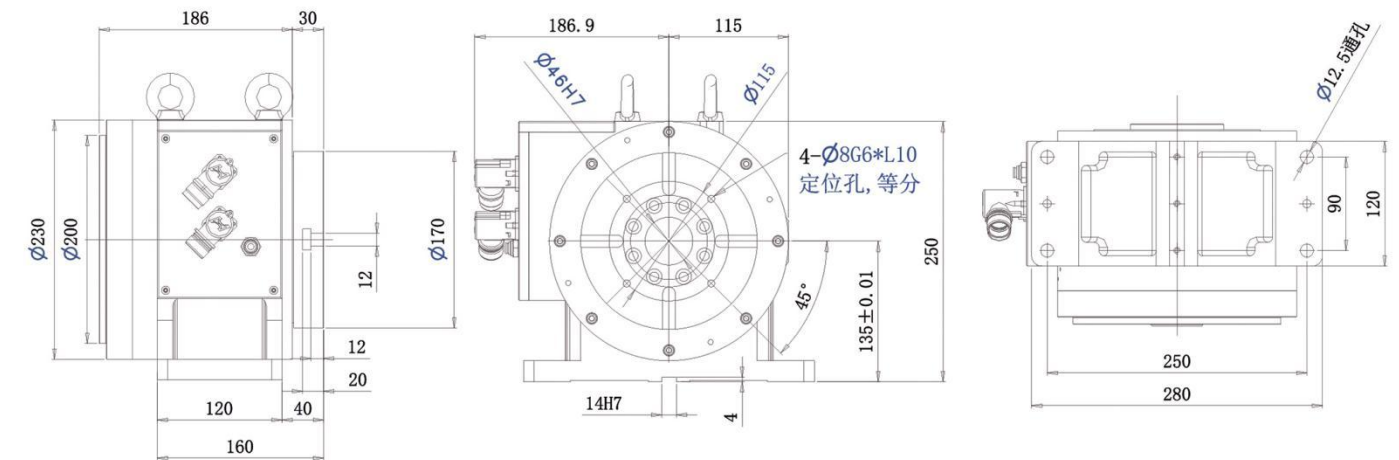
1. the use of large torque motor direct drive, inorganic transmission, no mechanical wear, high speed, high precision, zero back backlash
2. using the full circumference of the brake mechanism, brake response speed, brake force, stable, accurate, long-term use, no attenuation.
3. the use of YRT turntable special cross roller bearing, with higher radial load, rigidity and accuracy retention.
4. the use of integrated box structure, the structure is more compact, more stable.
5. the use of imported seals, oil, water, high temperature resistance, longer service life.



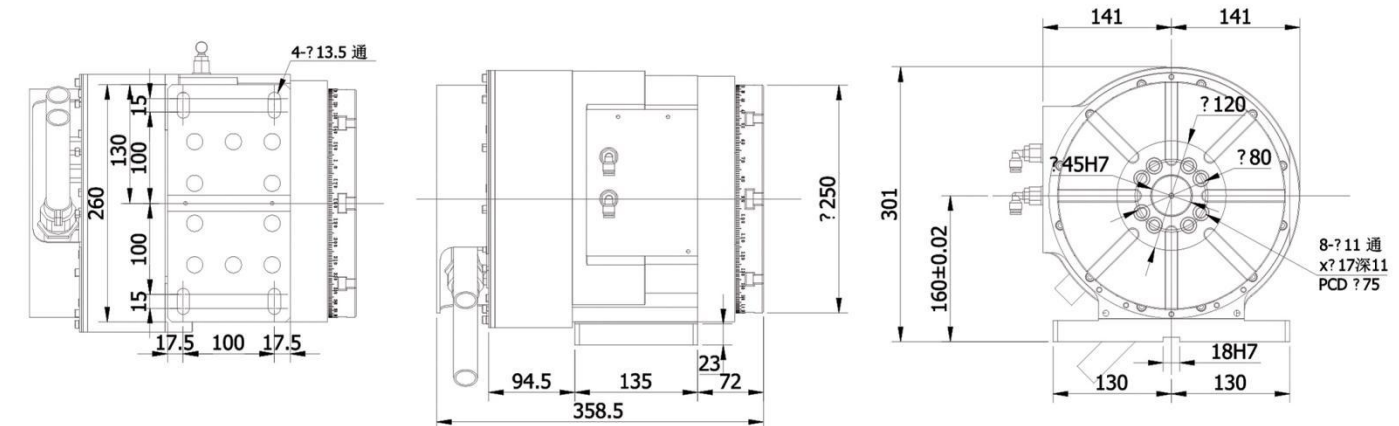
DDKA-175 250 320 Parameters Table

Item/Data	DDKA-175	DDKA-250	DDKA-320
Rotary Table Diameter(mm)	Φ 175	Φ 250	Φ 320
Diameter of Center Hole of Disk Face	Φ 46H7	Φ 46H7	Φ 46H7
Height of Center	135	160	Φ 210
Dial T-slot Width	12	12	12
Set key Width	14	18	18
Brake Pressure(KG/CM ²)	Barometric pressure 0.6Mpa	Barometric pressure 0.6Mpa	Oil pressure 30~35
Brake Torque(NM)	≥ 300	≥ 350	≥ 400
Cooling Mode	Natural cooling	Forced water cooling	Forced water cooling
Rated/Peak Torque(NM)	60/184	176/318	543/1030
Rated/peak Current(A)	6/13	7.7/17.9	12.8/18
Maximum Speed(rpm)	200	150	100
Positioning Accuracy(")	8	8	8
Repeated Positioning Accuracy(")	2	2	2
Allowable Load(KG)	25	65	150
Allowable Load with Tail Seat(KG)	50	130	300
Total weight(Kg)	35	60	80
Encoder	Fanuc, Mitsubishi, Siemens, SSI, BISSC, Endat2.2, ect.		

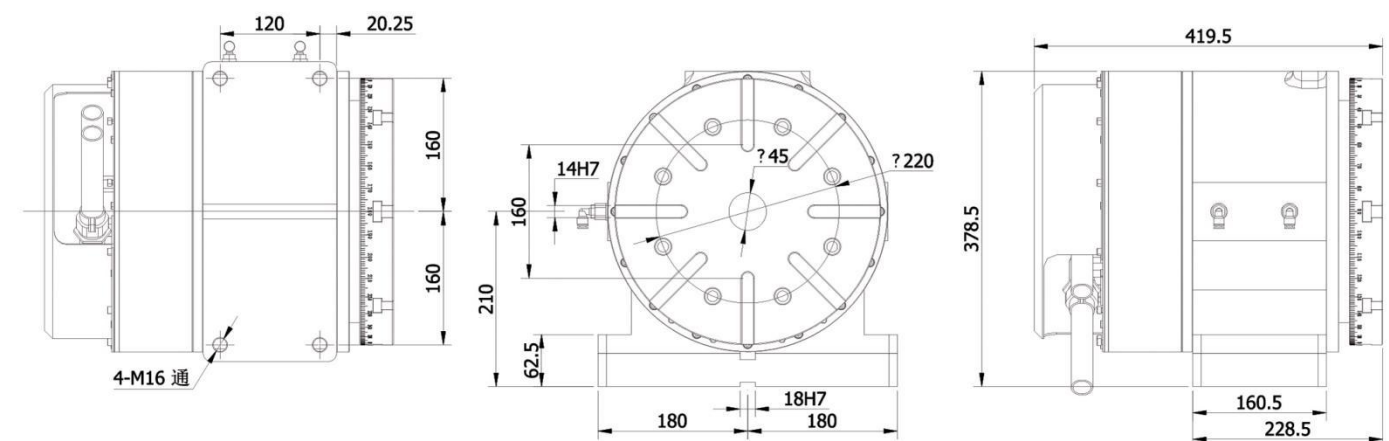
DDKA-175-135



DDKA-250-160



DDKA-320-210

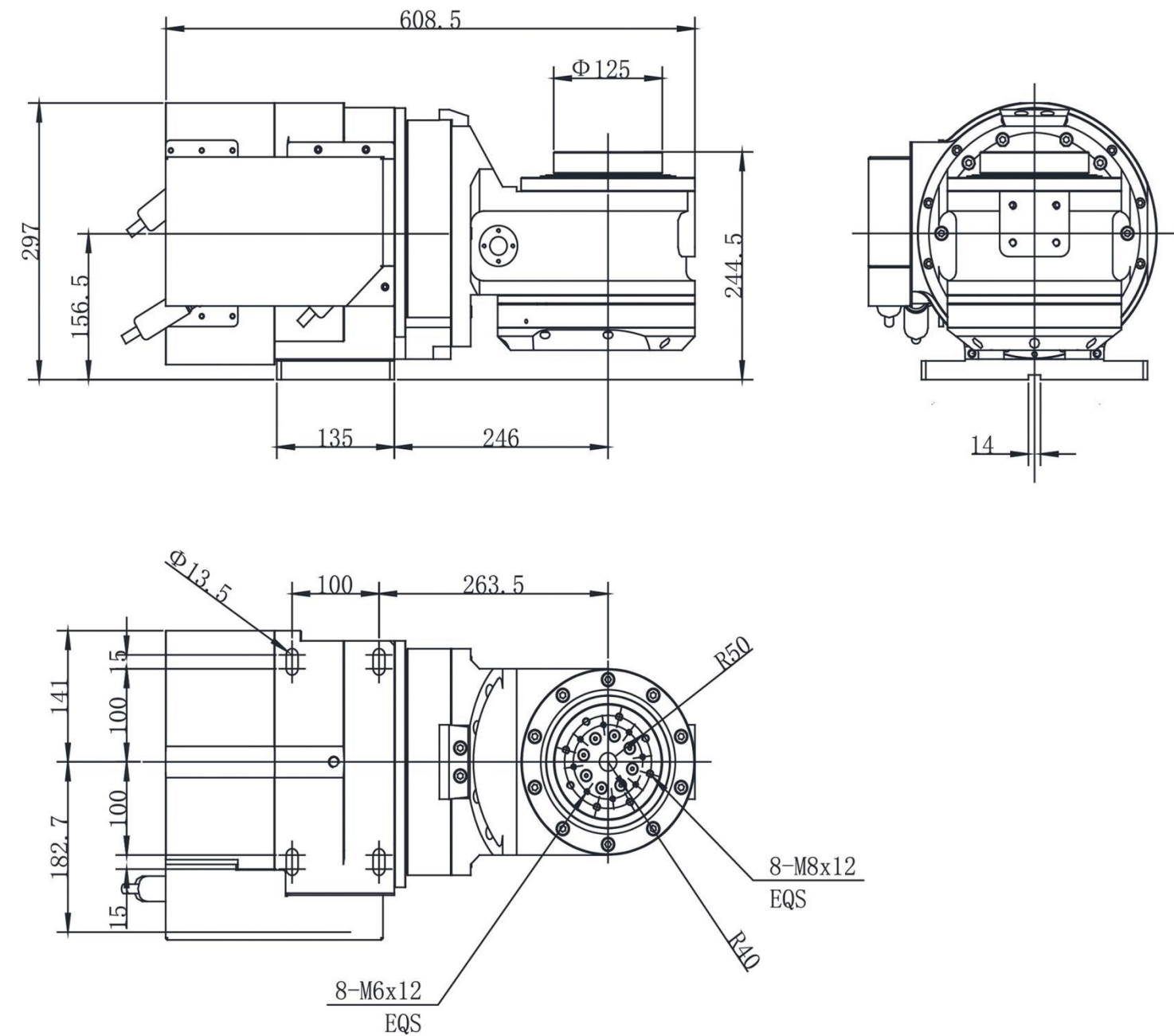


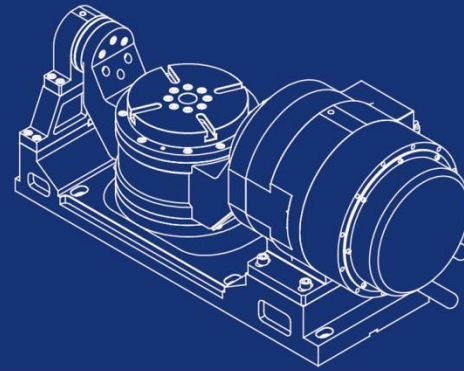


DD-DB-125\160\200 Parameters Table

Item	Inclined Axis	Axis of Rotation
Rotary Table Diameter(mm)	-	Φ 125\160\200
Maximum rotation diameter (mm)	-	Φ 200
Disk axial runout (mm)	-	0.01
Disk radial runout (mm)	-	0.01
Width for Located Block at the bottom(mm)	14	-
Brake pressure (MPa)	Barometric pressure 0.6	Barometric pressure 0.6
Braking torque (NM)	300	90
Rated voltage (V)	380	380
Rated/peak torque (NM)	176/318	39/66
Rated/peak current(A)	7.7/17.9	5.9/12.9
Maximum speed(rpm)	100	200
Positioning accuracy(")	8	8
Index Repeatability(")	2	2
Allowable load weight when braking (Kg)	-	Horizontal: 20 Tilt: 15
Rotation angle	± 110	Any angle
Encoder	According to the system confirmation, 23-26 digits	According to the system confirmation, 23-26 digits
Servo drive (optional)	F (bisv80-B)	F (bisv40-B)
	M (EJ-V1-40B)	M (EJ-V1-30B)
	S (6SL3120-1TE21)	S (6SL3120-1TE15)
Total weight(Kg)	110	

DD-DB-125

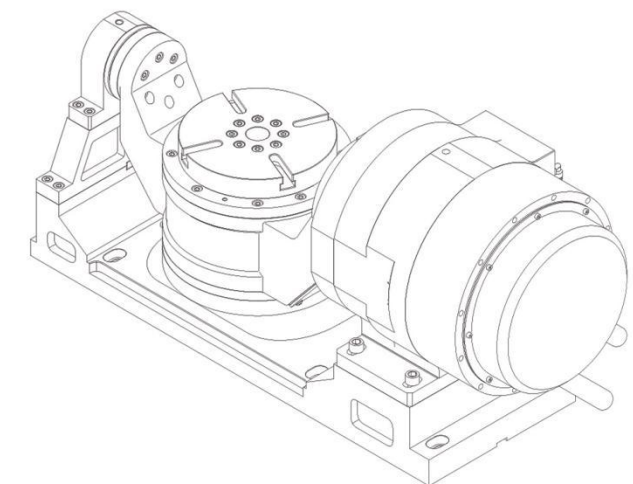
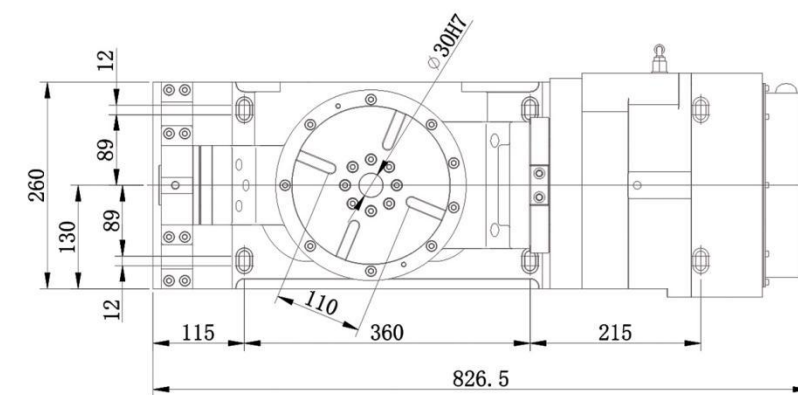
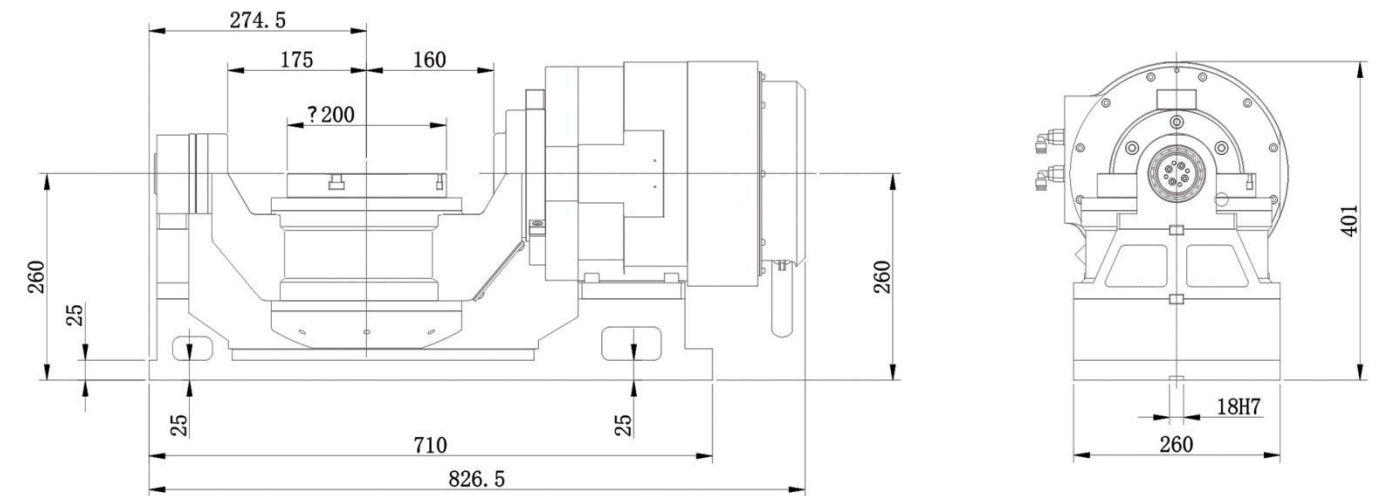




DD-YL-200A Parameters Table

Item	Inclined Axis	Axis of Rotation
Rotary Table Diameter(mm)	-	Φ 200\250
Maximum rotation diameter (mm)	-	Φ 300
Disk axial runout (mm)	-	0.01
Disk radial runout (mm)	-	0.01
Width for Located Block at the bottom(mm)	18	-
Brake pressure (MPa)	Barometric pressure 0.6	Barometric pressure 0.6
Braking torque (NM)	300	110
Rated voltage (V)	380	380
Rated/peak torque (NM)	176/318	60/118
Rated/peak current(A)	7.7/17.9	5.5/14
Maximum speed(rpm)	100	200
Positioning accuracy(")	8	8
Index Repeatability(")	2	2
Allowable load weight when braking (Kg)	-	Horizontal: 50 Tilt: 40
Rotation angle	± 110	Any angle
Encoder	According to the system confirmation, 23-26 digits	According to the system confirmation, 23-26 digits
Servo drive (optional)	F (bisv80-B)	F (bisv40-B)
	M (EJ-V1-40B)	M (EJ-V1-30B)
	S (6SL3120-1TE21)	S (6SL3120-1TE15)
Total weight(Kg)	240	

DD-YL-200A

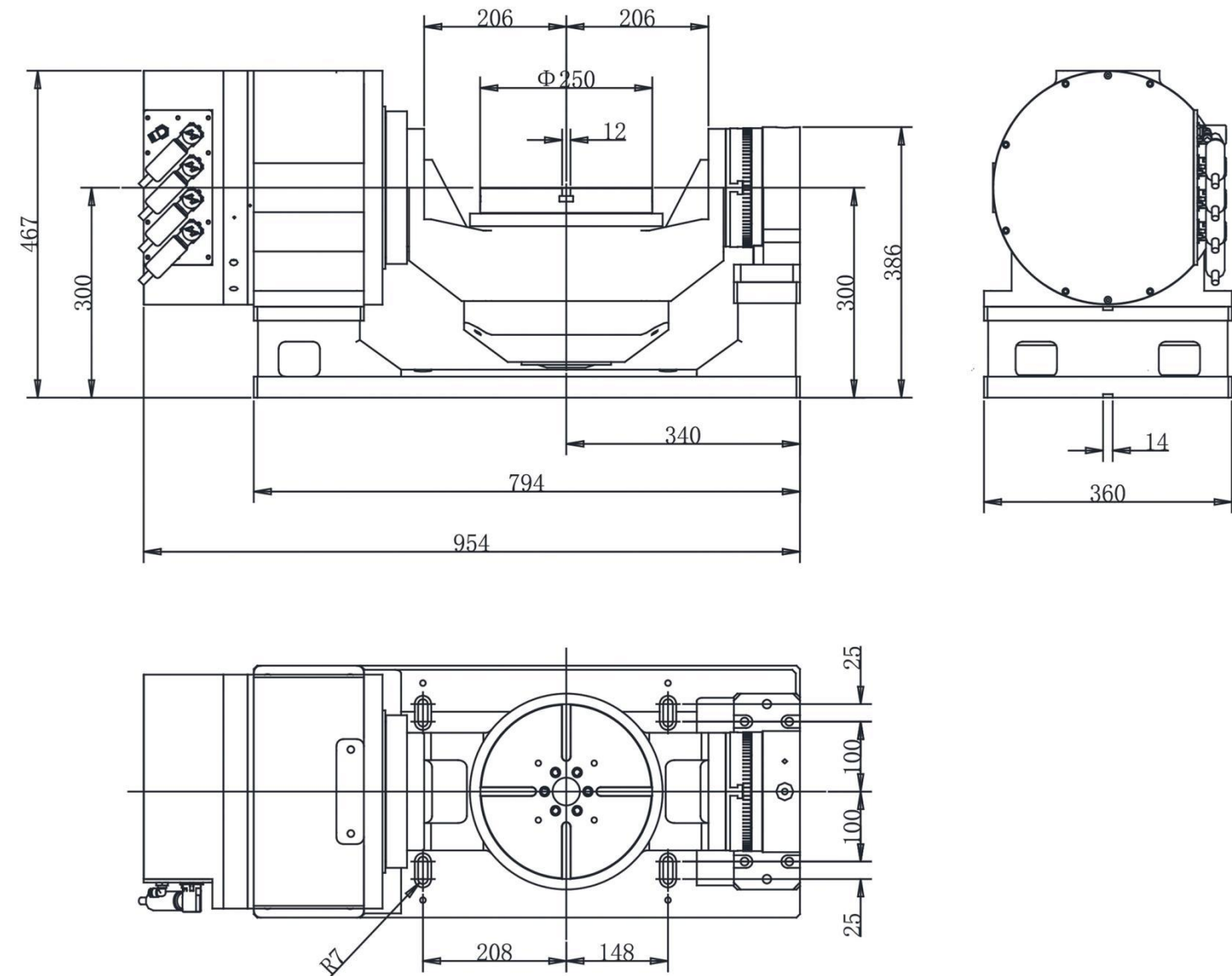


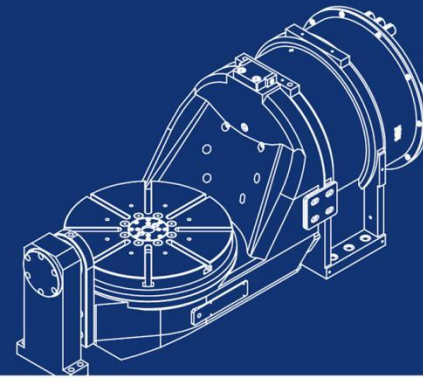


DD-YL-250 Parameters Table

Item	Inclined Axis	Axis of Rotation
Rotary Table Diameter(mm)	-	Φ 250\300
Maximum rotation diameter (mm)	-	Φ 350
Disk axial runout (mm)	-	0.01
Disk radial runout (mm)	-	0.01
Width for Located Block at the bottom(mm)	14	-
Brake pressure (MPa)	Barometric pressure 30-35Kg/cm ²	Barometric pressure 30-35Kg/cm ²
Braking torque (NM)	400	200
Rated voltage (V)	380	380
Rated/peak torque (NM)	543/1030	174/318
Rated/peak current(A)	12.8/17.9	7.7/14
Maximum speed(rpm)	100	200
Positioning accuracy(")	8	8
Index Repeatability(")	2	2
Allowable load weight when braking (Kg)	-	Horizontal: 60 Tilt: 50
Rotation angle	± 110	Any angle
Encoder	According to the system confirmation, 23-26 digits	According to the system confirmation, 23-26 digits
Servo drive (optional)	F (bisv80-B)	F (bisv40-B)
	M (EJ-V1-80B)	M (EJ-V1-40B)
	S (6SL3120-1TE21)	S (6SL3120-1TE21)
Total weight(Kg)	250	

DD-YL-250

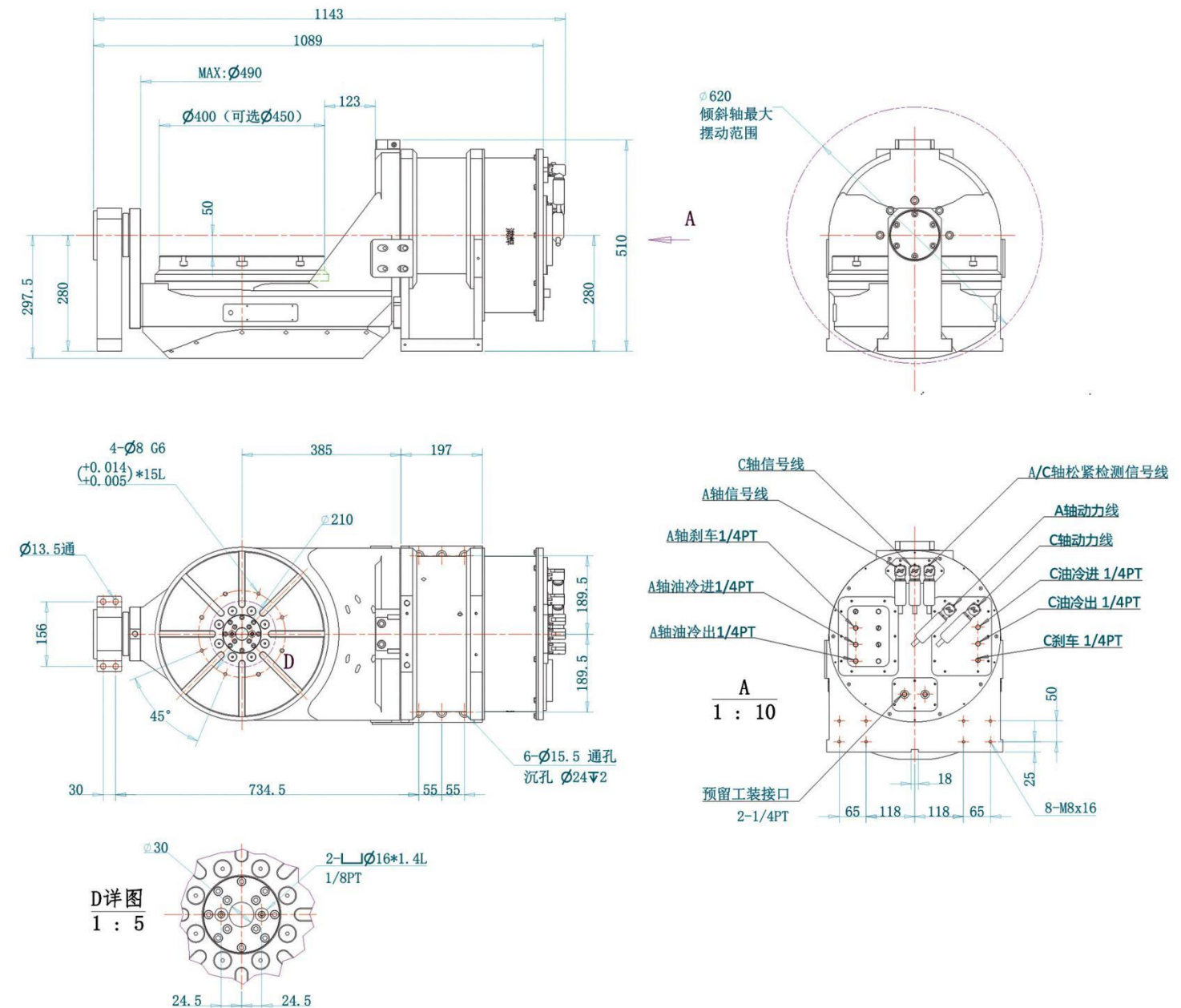


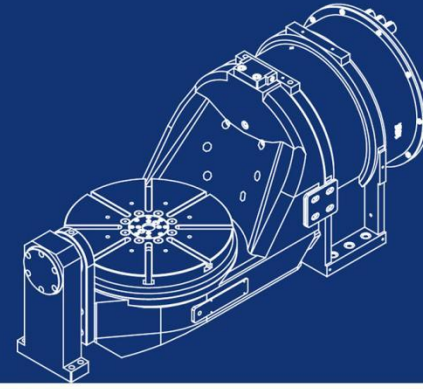


DD-YL-400 Parameters Table

Item	Inclined Axis	Axis of Rotation
Rotary Table Diameter(mm)	-	Φ 400
Maximum rotation diameter (mm)	-	Φ 490
Disk axial runout (mm)	-	0.01
Disk radial runout (mm)	-	0.01
Width for Located Block at the bottom(mm)	18	-
Brake pressure (MPa)	Barometric pressure 30-35Kg/cm ²	Barometric pressure 30-35Kg/cm ²
Braking torque (NM)	1300	900
Rated voltage (V)	380	380
Rated/peak torque (NM)	782/1540	242/498
Rated/peak current(A)	16.5/41.9	7.1/14
Maximum speed(rpm)	100	180
Positioning accuracy(")	8	8
Index Repeatability(")	2	2
Allowable load weight when braking (Kg)	-	Horizontal: 300 Tilt: 200
Rotation angle	± 110	Any angle
Encoder	According to the system confirmation, 23-26 digits	According to the system confirmation, 23-26 digits
Servo drive (optional)		
Total weight(Kg)	500	

DD-YL-400

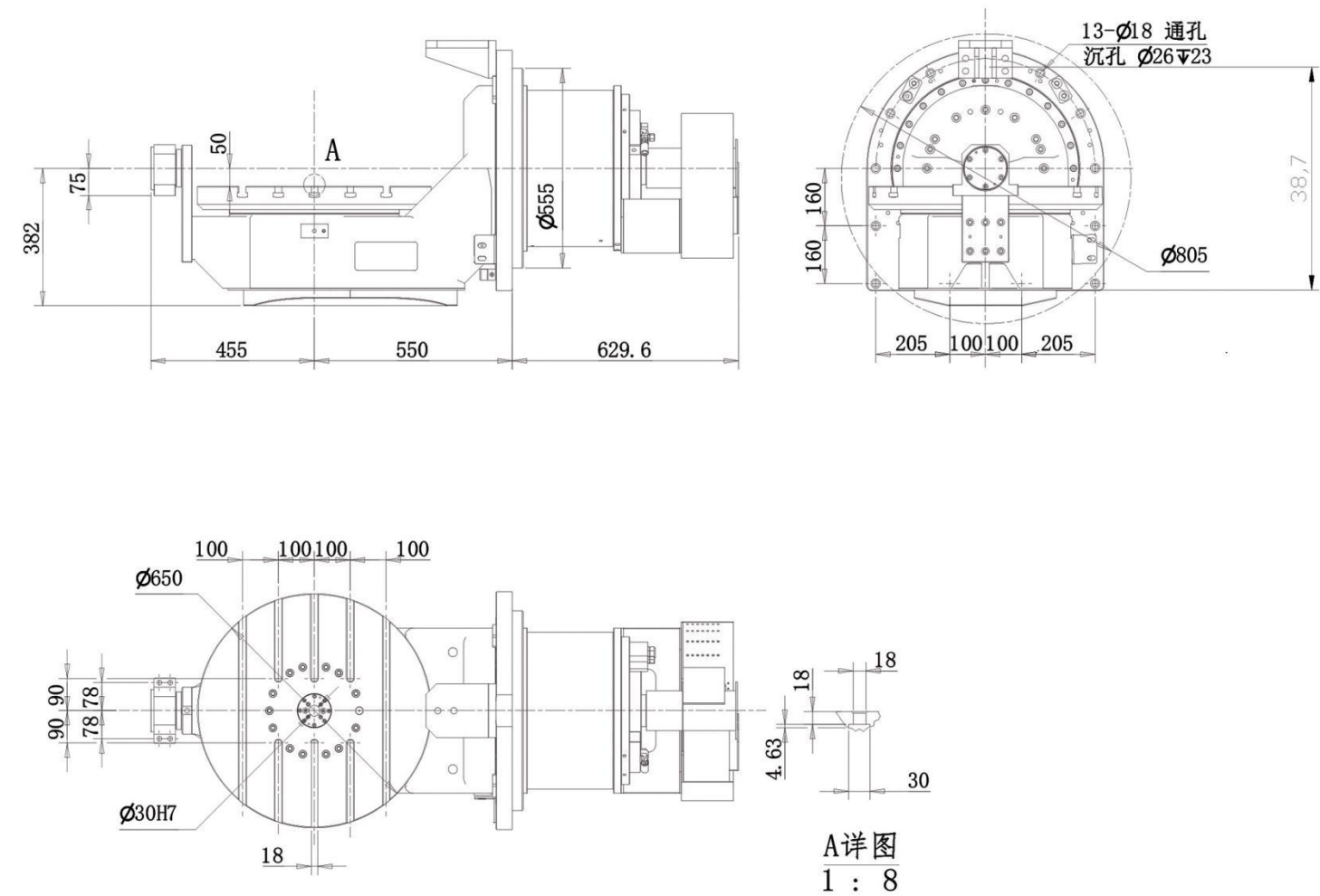




DD-YL-650 Parameters Table

Item	Inclined Axis	Axis of Rotation
Rotary Table Diameter(mm)	-	Φ 650
Maximum rotation diameter (mm)	-	Φ 650
Disk axial runout (mm)	-	0.01
Disk radial runout (mm)	-	0.01
Width for Located Block at the bottom(mm)	18	-
Brake pressure (MPa)	Barometric pressure 30-35Kg/cm ²	Barometric pressure 30-35Kg/cm ²
Braking torque (NM)	2500	1500
Rated voltage (V)	380	380
Rated/peak torque (NM)	1680/2940	596/1000
Rated/peak current(A)	27.1/70.1	10.3/25.8
Maximum speed(rpm)	50	100
Positioning accuracy(")	8	8
Index Repeatability(")	2	2
Allowable load weight when braking (Kg)	-	Horizontal: 350 Tilt: 250
Rotation angle	± 110	Any angle
Encoder	According to the system confirmation, 23-26 digits	According to the system confirmation, 23-26 digits
Servo drive (optional)		
Total weight(Kg)	960	

DD-YL-650

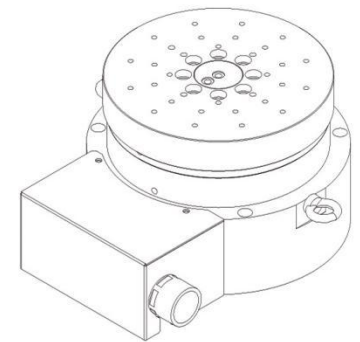
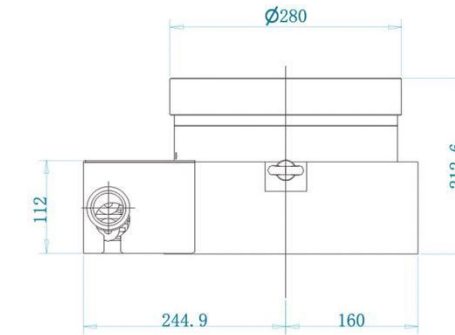
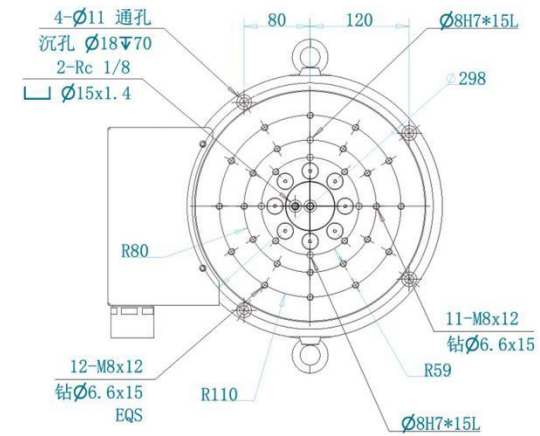




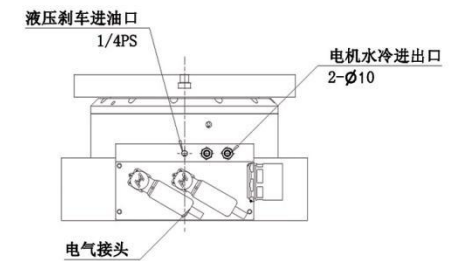
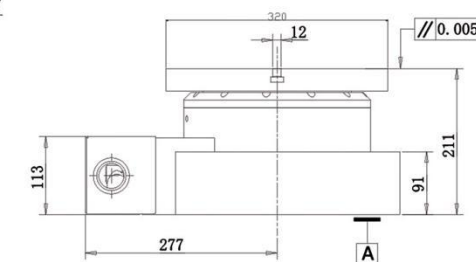
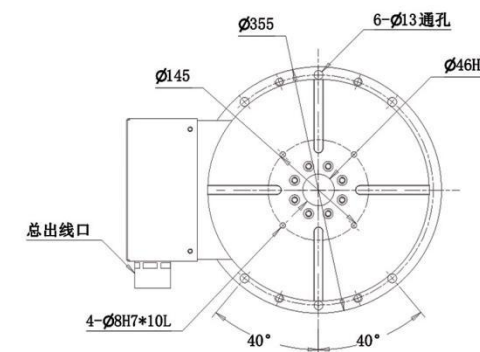
DDKE-280 320 500 630 Parameters Table

Item/Data	DDKE-280	DDKE-320	DDKE-500	DDKE-630
Rotary Table Diameter(mm)	Φ 280	Φ 320	Φ 500	Φ 630
Diameter of Center Hole of Disk Face	Φ 46H7	Φ 46H7	Φ 50H7	Φ 75H7
Height of Center	High-speed type	Low-speed type	Low-speed type	Low-speed type
Dial T-slot Width	-	-	-	-
Set key Width	-	-	-	-
Brake Pressure(KG/CM ²)	Barometric pressure 0.6Mpa	Barometric pressure 0.6Mpa	Oil pressure 30~35	Oil pressure 30~35
Brake Torque(NM)	≥ 250	≥ 300	≥ 400	≥ 500
Cooling Mode	Forced water cooling	Forced water cooling	Forced water cooling	Forced water cooling
Rated/Peak Torque(NM)	37/55	122/223	249/498	672/1210
Rated/peak Current(A)	21/32	7.7/17.9	8/20.7	13/25
Maximum Speed(rpm)	1500	200	150	100
Positioning Accuracy(")	8	8	8	8
Repeated Positioning Accuracy(")	2	2	2	2
Allowable Load(KG)	60	150	300	600
Allowable Load with Tail Seat(KG)	-	-	-	-
Total weight(Kg)	75	85	250	350
Encoder	Fanuc, Mitsubishi, Siemens, SSI, BISSC, Endat2.2, ect.			

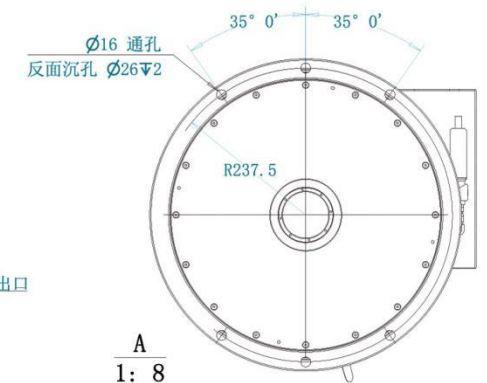
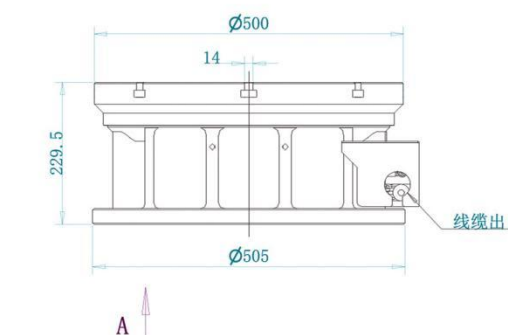
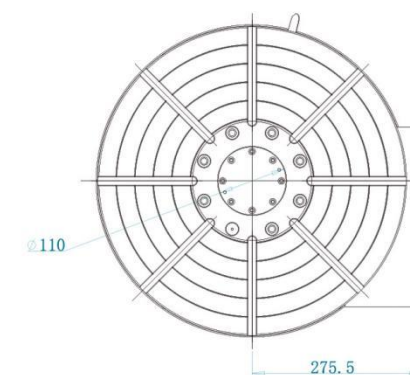
DDKE-280-1500

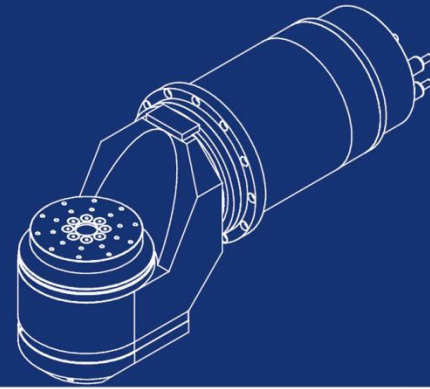


DDKE-320-200



DDKE-500-150

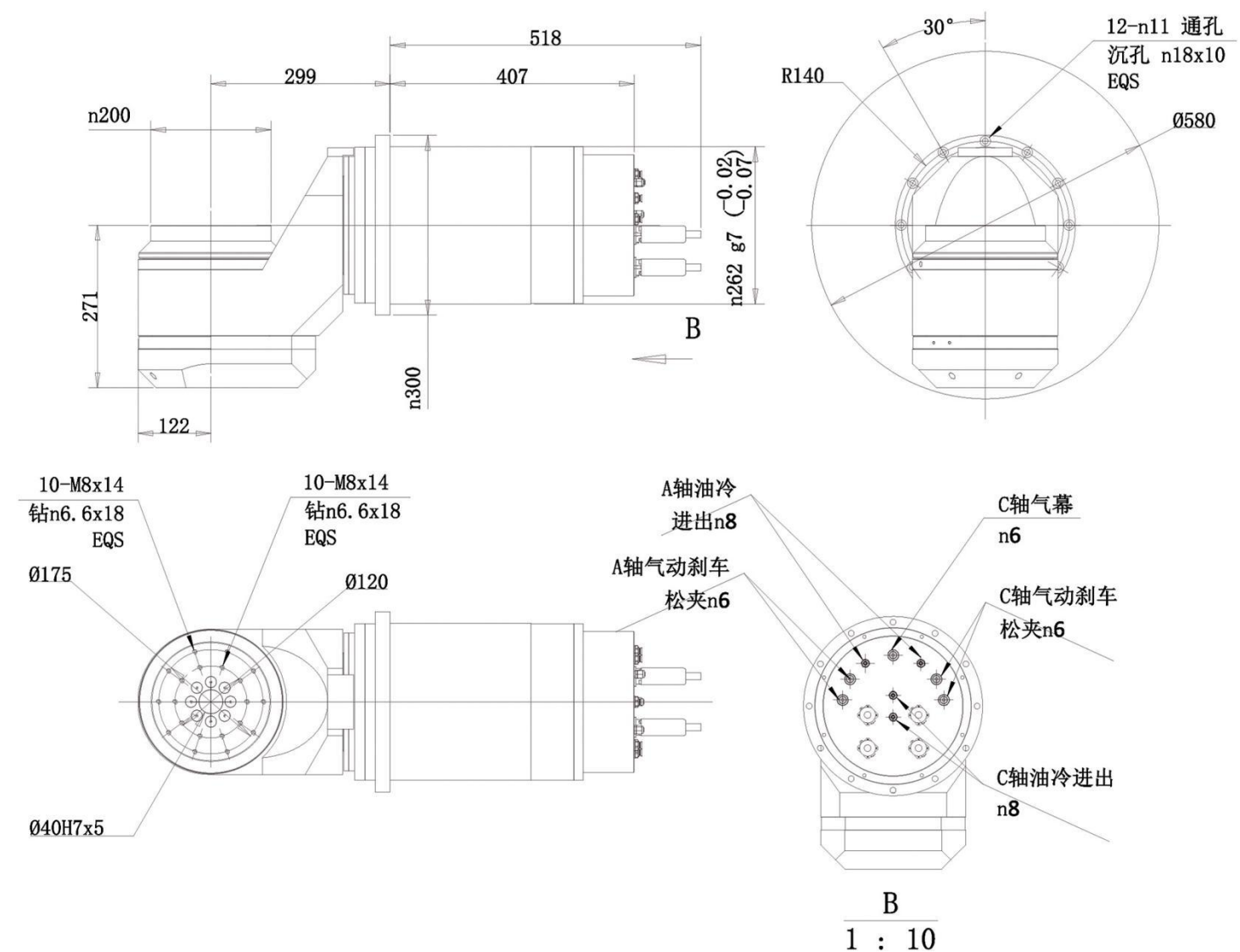




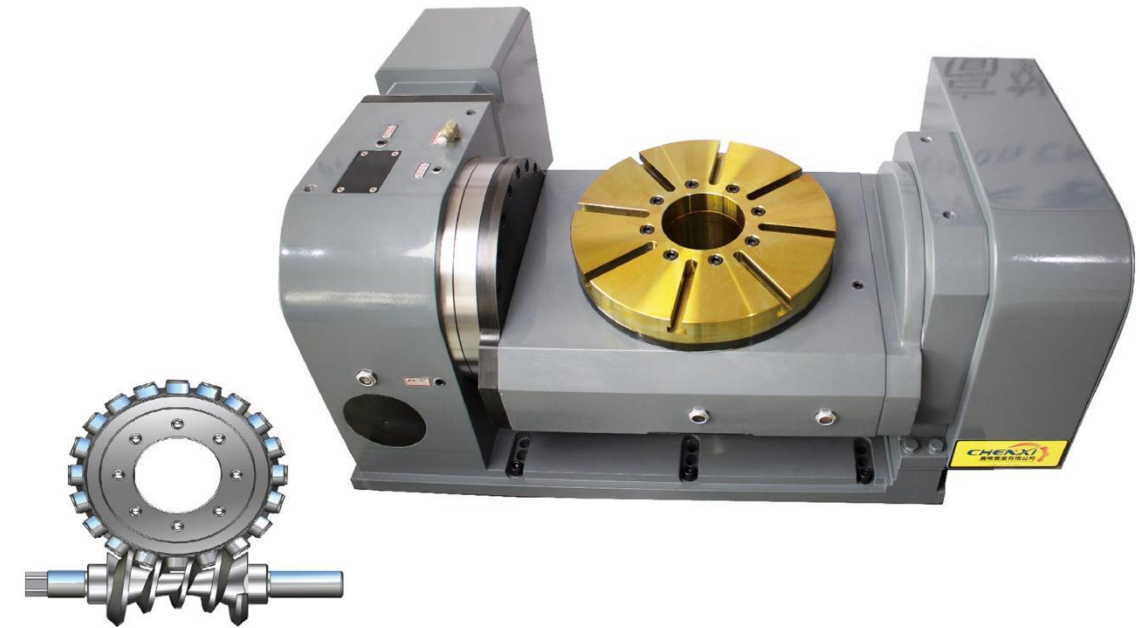
DD-RDB-200-1200 Parameters Table

Item	Inclined Axis	Axis of Rotation
Rotary Table Diameter(mm)	-	Φ 200\250
Maximum rotation diameter (mm)	-	Φ 260
Disk axial runout (mm)	-	0.01
Disk radial runout (mm)	-	0.01
Width for Located Block at the bottom(mm)	-	-
Brake pressure (MPa)	Barometric pressure 0.6	Barometric pressure 0.6
Braking torque (NM)	300	100
Rated voltage (V)	380	380
Rated/peak torque (NM)	406/698	87/165
Rated/peak current(A)	11.7/25.9	25.7/62.8
Maximum speed(rpm)	100	1200
Positioning accuracy(")	8	8
Index Repeatability(")	2	2
Allowable load weight when braking (Kg)	-	Horizontal: 35 Tilt: 25
Rotation angle	± 110	Any angle
Encoder	According to the system confirmation, 23-26 digits	According to the system confirmation, 23-26 digits
Servo drive (optional)	-	-
Total weight(Kg)	150	

DD-RDB-200-1200

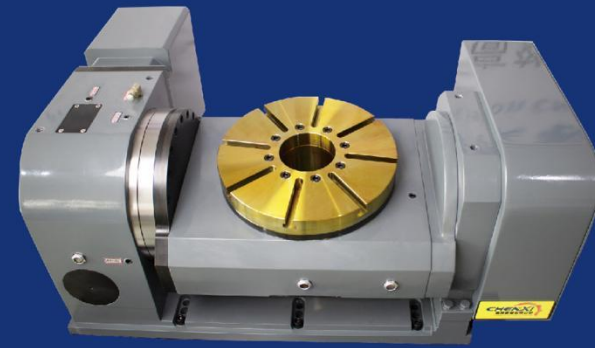


Roller Cam 5th Axis Rotary Table



Features:

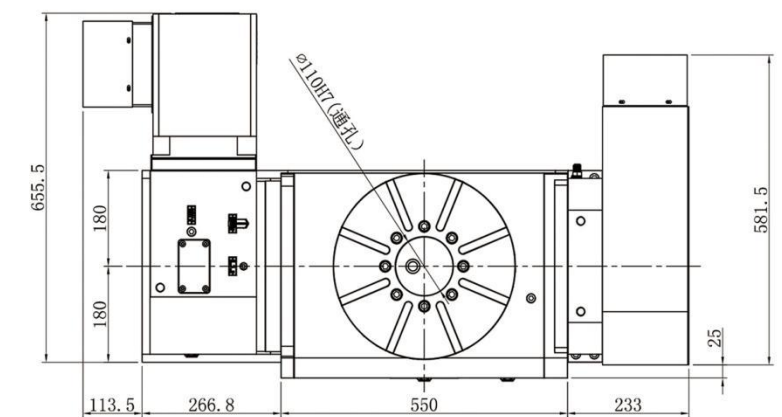
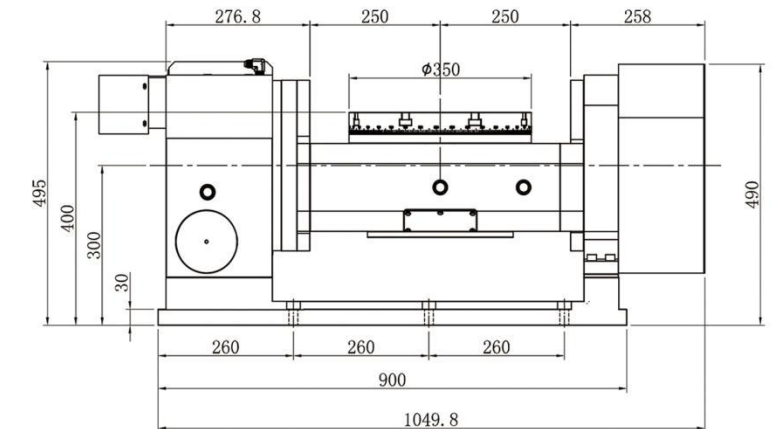
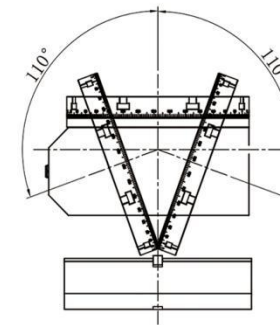
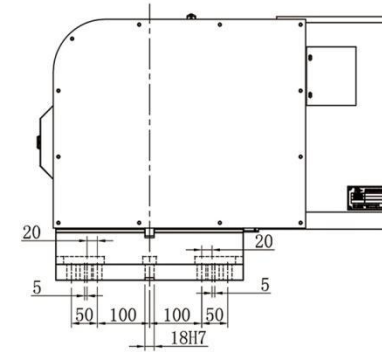
1. The core transmission mechanism adopts a cam transmission mechanism, which is high-precision, has zero backlashes, and is wear-resistant.
2. The whole series adopts a hydraulic full-circumference brake mechanism, with fast braking response (no delay) and large braking force, Stable, accurate, and long-term use, with no attenuation.
3. The whole series adopts YRT series turntable special crossed roller bearings, with higher radial load capacity. better rigidity, and the entire machine's accuracy retention.
4. The design of the whole machine adopts imported seals, which are resistant to oil, water, and high temperature, and have a longer service time.

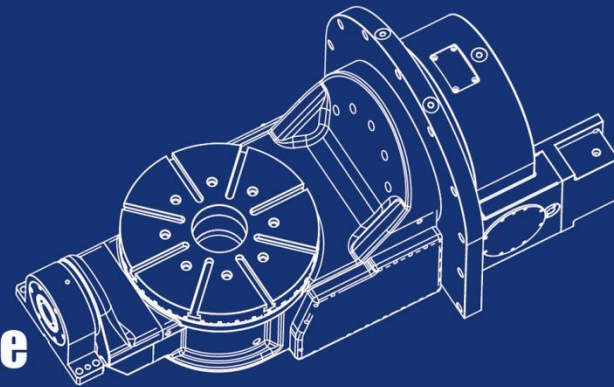


TB-YL-350 Parameters Table

Item	Inclined Axis	Axis of Rotation
Rotary Table Diameter(mm)	-	Φ 350
Disk Height - Level(mm)	-	400
Disk axial runout (mm)	-	0.01
Disk radial runout (mm)	-	0.01
Table rotation center height(mm)	-	300
Table T-slot width(mm)	-	14H7
Set key width(mm)	18	-
Journey	± 110	
Applicable ambient temperature (°C)	10-50	10-50
Brake operating pressure(Kg/cm ²)	Oil pressure 30-35	Oil pressure 30-35
Equal partition minimum Angle	0.001	0.001
Positioning accuracy(")	± 20	± 15
Index Repeatability(")	± 4	± 4
Reduction ratio	1: 72	1: 72
Allowable load weight when braking (Kg)	-	Horizontal: 200 Tilt: 160
Allowable cutting torque(kgf-m)	-	Horizontal: 180 Tilt: 160
Servo drive (optional)		
Total weight(Kg)	585	

TB-YL-350

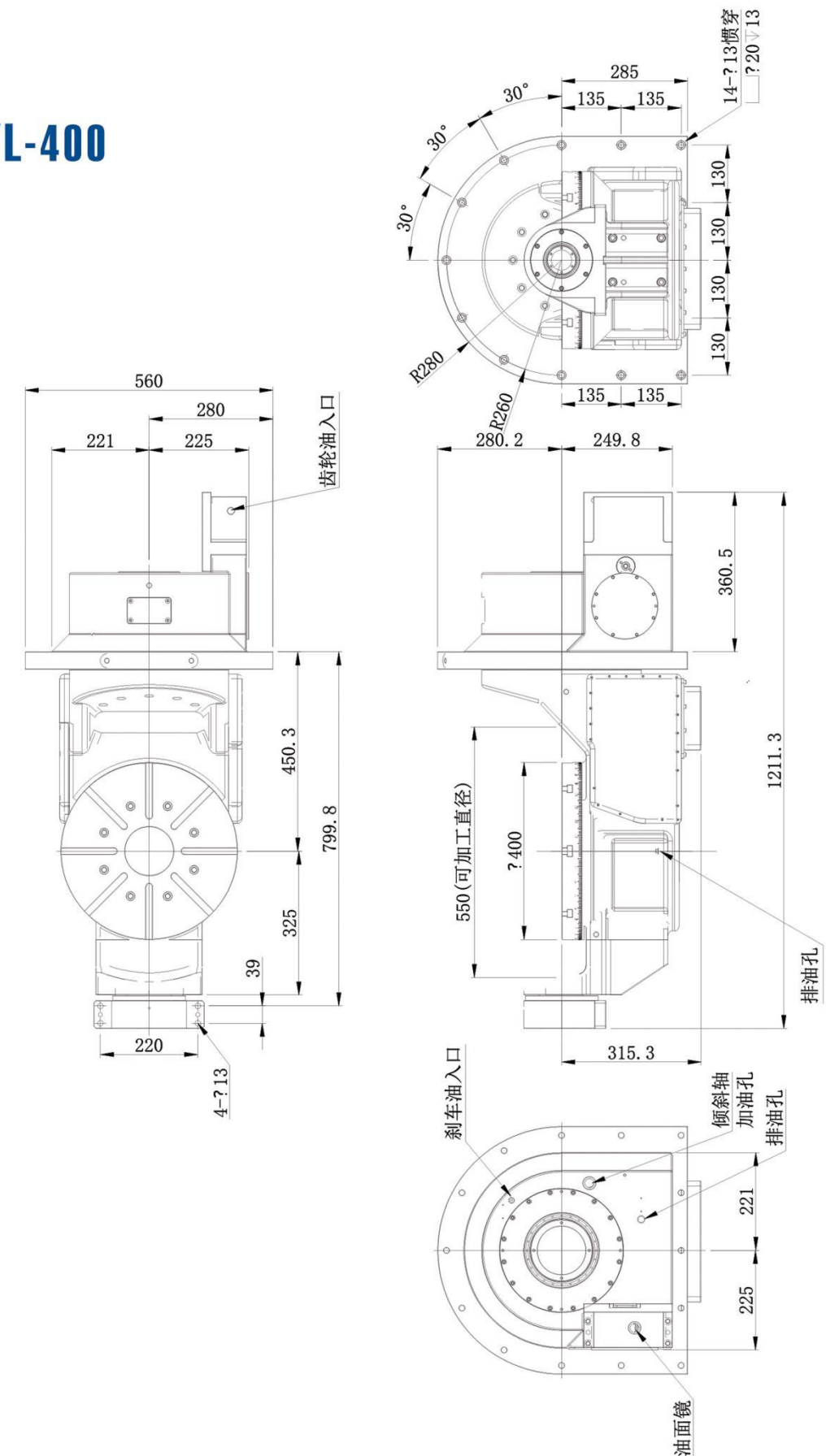




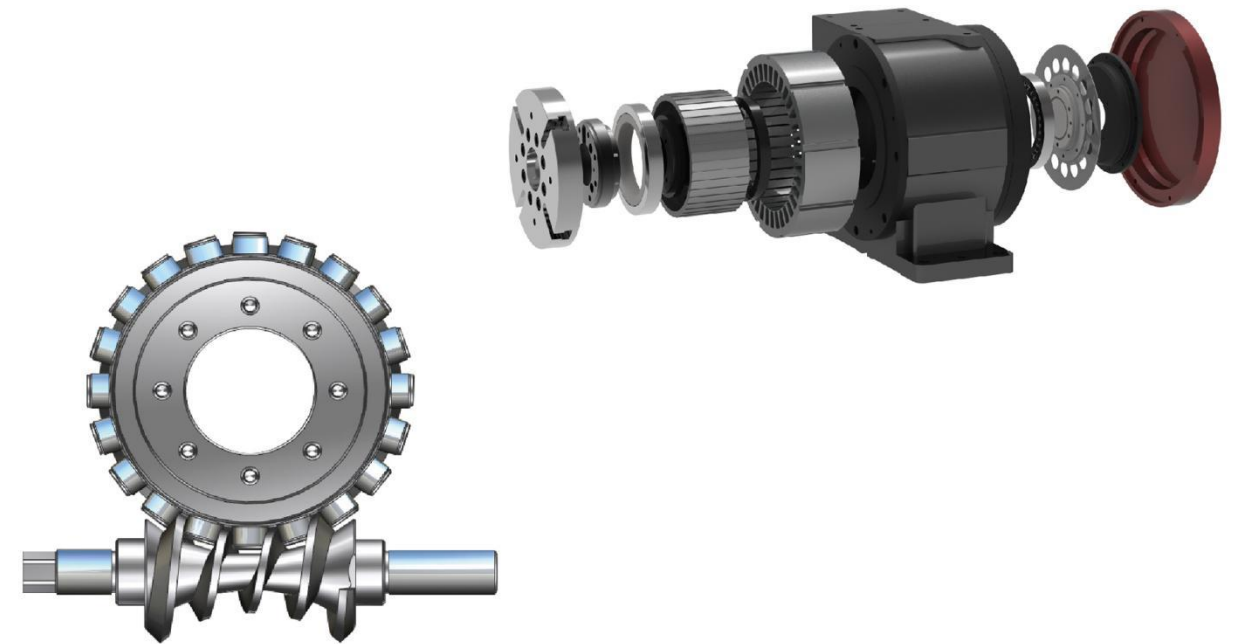
TB-RYL-400 Parameters Table

Item	Inclined Axis	Axis of Rotation
Rotary Table Diameter(mm)	-	Φ 350
Disk Height - Level(mm)	-	400
Disk axial runout (mm)	-	0.01
Disk radial runout (mm)	-	0.01
Table rotation center height(mm)	-	300
Table T-slot width(mm)	-	14H7
Set key width(mm)	18	-
Journey	± 110	Any angle
Applicable ambient temperature (°C)	10-50	10-50
Brake operating pressure(Kg/cm ²)	Oil pressure 30-35	Oil pressure 30-35
Equal partition minimum Angle	0.001	0.001
Positioning accuracy(")	± 10 (Tape grating)	± 10 (Tape grating)
Index Repeatability(")	± 3 (Tape grating)	± 3 (Tape grating)
Reduction ratio	1: 72	1: 72
Allowable load weight when braking (Kg)	-	Horizontal: 200 Tilt: 160
Allowable cutting torque(kgf-m)	-	Horizontal: 180 Tilt: 160
Servo drive (optional)		
Total weight(Kg)	800	

TB-RYL-400



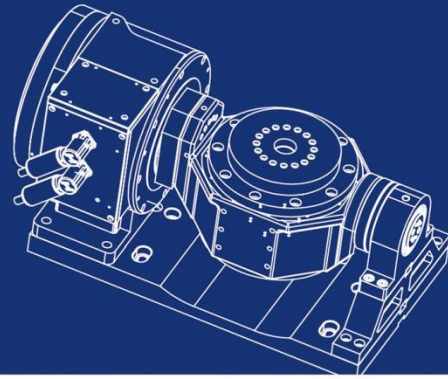
Hybrid Drive 5th Axis Rotary Table



Features:

The hybrid drive five-axis turntable is used in the following forms:

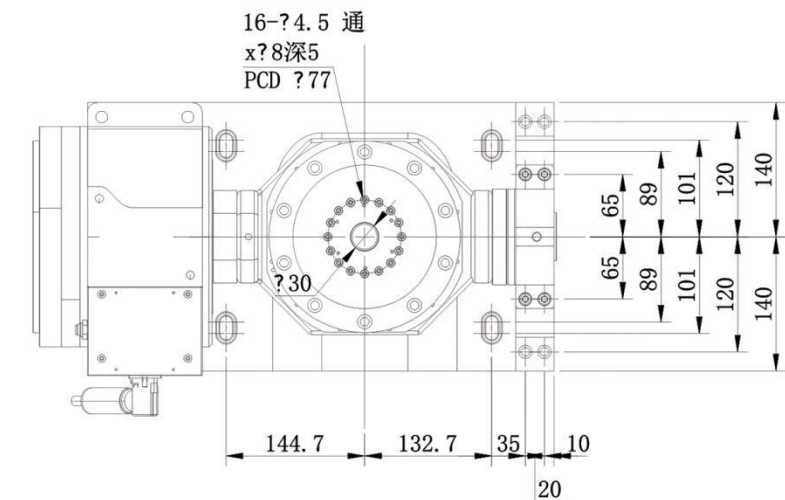
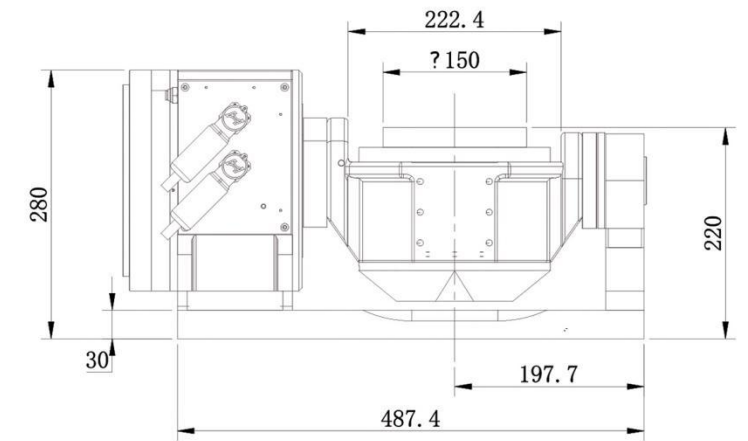
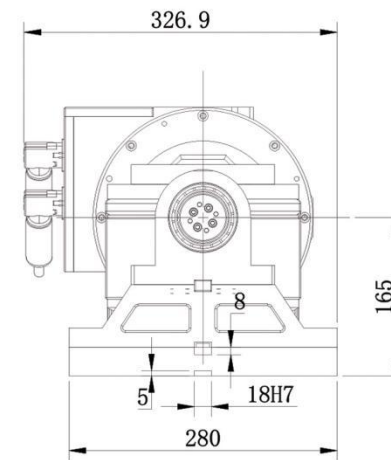
roller CAM +DD Roller CAM + harmonic DD+ harmonic and other forms are used to make up for special off-load, small space, low center high special application scenarios with compact structure, stable transmission, high and low speed can be customized.



DD-XBYL-150 Parameters Table

Item	Tilt shaft: DD direct drive	Rotating axis: Harmonic drive
Rotary Table Diameter(mm)	-	Φ 150
Disk Height - Level(mm)	-	220
Disk axial runout (mm)	-	0.01
Disk radial runout (mm)	-	0.01
Table rotation center height(mm)	-	165
Table T-slot width(mm)	-	-
Set key width(mm)	18	-
Journey	± 110	Any angle
Brake torque(NM)	300	-
Brake operating pressure	Barometric pressure 0.6Mpa	-
Minimum partition unit	0.001	0.001
Positioning accuracy(")	10	20
Index Repeatability(")	4	8
Reduction ratio	-	1: 51
Allowable load weight when braking (Kg)	-	30
Allowable cutting torque(kgf-m)	-	8-20
Rated/maximum speed(rpm)	100/200	30/40
Rated/maximum torque (NM)	60/180	4/8
Rated/maximum current(A)	6/13	3/6
Total weight(Kg)	200	

DD-XBYL-150

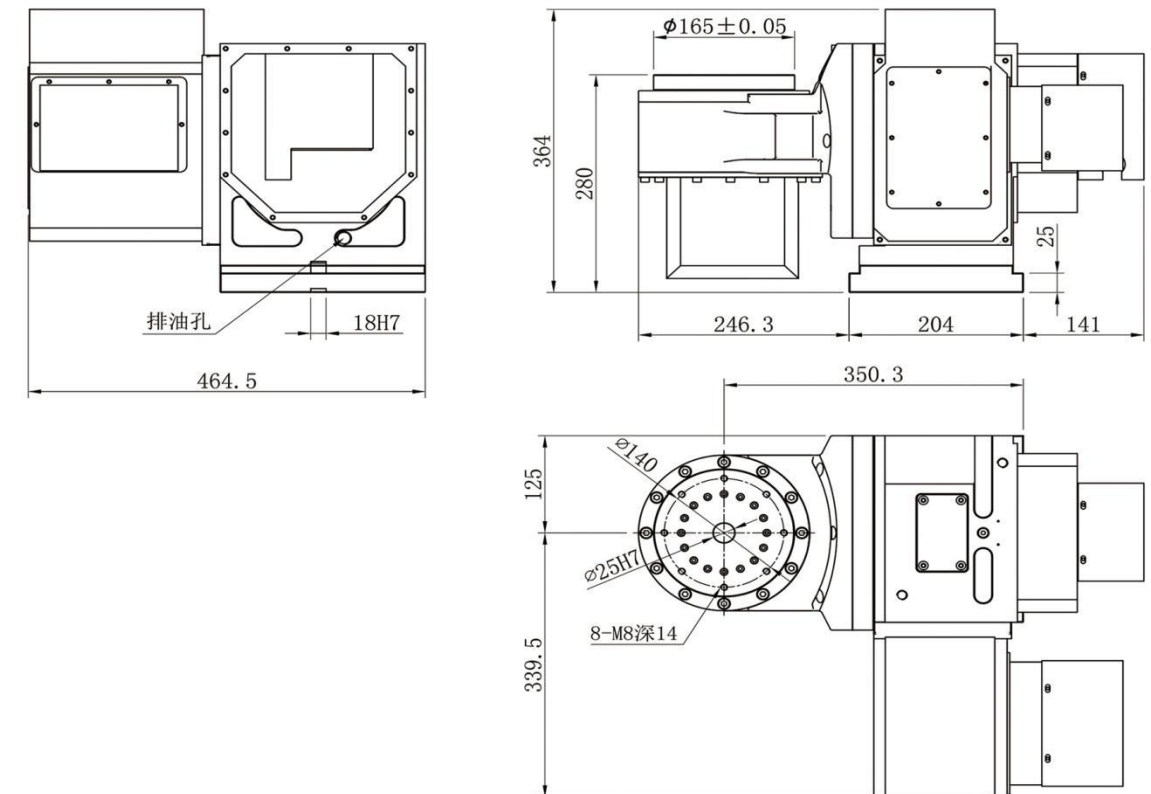


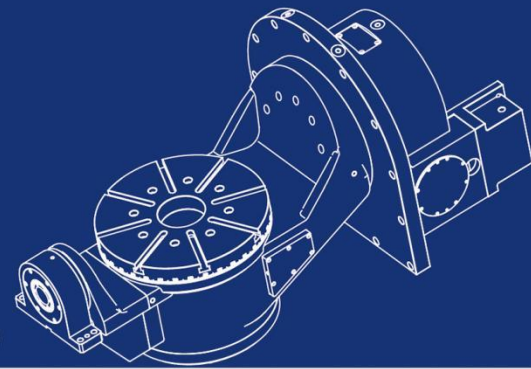


TB-XBDB-165 Parameters Table

Item	Tilt shaft: roller CAM drive	Rotating axis: Harmonic drive
Rotary Table Diameter(mm)	-	Φ 165
Disk Height - Level(mm)	-	280
Disk axial runout (mm)	-	0.01
Disk radial runout (mm)	-	0.01
Table rotation center height(mm)	-	195
Table T-slot width(mm)	-	-
Set key width(mm)	18	-
Journey	± 110	Any angle
Brake torque(NM)	300	-
Brake operating pressure	Oil pressure 30-35	-
Minimum partition unit	0.001	0.001
Positioning accuracy(")	30	25
Index Repeatability(")	8	8
Reduction ratio	1:60	1: 81
Allowable load weight when braking (Kg)	-	20
Allowable cutting torque(kgf-m)	-	8-20
Rated/maximum speed(rpm)	-	-
Rated/maximum torque (NM)	-	-
Rated/maximum current(A)	-	-
Total weight(Kg)	136	

TB-XBDB-165





TB-RDDYL-400 Parameters Table

Item	Tilt shaft: roller CAM drive	Rotating axis: DD direct drive
Rotary Table Diameter(mm)	-	Φ400
Disk Height - Level(mm)	-	-
Disk axial runout (mm)	-	0.01
Disk radial runout (mm)	-	0.01
Table rotation center height(mm)	-	-
Table T-slot width(mm)	-	14H7
Set key width(mm)	-	-
Journey	± 110	Any angle
Brake torque(NM)	1000	400
Brake operating pressure	Oil pressure 30-35	Oil pressure 30-35
Minimum partition unit	0.001	0.001
Positioning accuracy(")	± 10 (Tape grating)	10
Index Repeatability(")	± 3 (Tape grating)	4
Reduction ratio	1:90	-
Allowable load weight when braking (Kg)	-	160
Allowable cutting torque(kgf-m)	-	160
Rated/maximum speed(rpm)	-	100/150
Rated/maximum torque (NM)	-	240/490
Rated/maximum current(A)	-	12/43
Total weight(Kg)	800	

TB-RDDYL-400

